

# Gallery Guide

Columbia, Missouri



## PICTURE THIS!

**A guide to museums, galleries and visual art opportunities in Columbia, Missouri**

City of Columbia · Convention & Visitors Bureau  
Office of Cultural Affairs

# Picture This!

<b>Artrageous Fridays .....</b>	<b>4</b>
<b>galleries</b>	
<b>downtown in the District.....</b>	<b>5</b>
<b>elsewhere in Columbia .....</b>	<b>10</b>
<b>on college campuses.....</b>	<b>11</b>
<b>corporate collections of note .....</b>	<b>14</b>
<b>in neighboring communities.....</b>	<b>15</b>
<b>art while you eat .....</b>	<b>17</b>
<b>your inner artist.....</b>	<b>18</b>
<b>murals of note .....</b>	<b>19</b>
<b>public art.....</b>	<b>20</b>
<b>art on the Web.....</b>	<b>21</b>
<b>location maps .....</b>	<b>22</b>

## CONTENTS



The City of Columbia  
Office of Cultural Affairs

**COLUMBIA**  
The smart, passionate, arts, athletic, entrepreneurial, vibrant, and historic city



**Missouri  
Arts Council**

THIS GUIDE WAS COMPILED by the  
City of Columbia Office of Cultural Affairs (OCA)  
in collaboration with Columbia's Convention and  
Visitors Bureau (CVB). Funding was provided by the OCA, CVB  
and the Missouri Arts Council, a state agency.

## **COLUMBIA HAS NO SHORTAGE OF VISUAL ART OPPORTUNITIES.**

With a variety of galleries and museums, residents and visitors alike will find plenty to see and much to buy. Expect an array of art at the galleries and museums listed in this guide—painting, photography, ceramics, fiber, sculpture, jewelry, glass, metal and more—made by local and regional artists, as well as those from around the nation and the world. Retail galleries sell the works displayed while museums do not, though museums often have gift shops on site with unique arts-oriented items for sale. Offerings at all locations change regularly, so visit often. When you do, think about what’s on your walls at home and at work. Displaying original art gives a space character and distinguishes it in a way that other items cannot.

A great effort has been made to ensure the accuracy of the information included in this guide. Used as a reference, it can enhance your enjoyment of Columbia; however, the guide is not a comprehensive inventory. Operating hours for the locations listed in the guide were current as of the date of publication. Visitors are encouraged to call ahead to confirm. The city has planned future revisions of the guide to include any new locations.

### **FOR MORE INFORMATION**

about art in Columbia, go to  
[www.ColumbiaGalleries.com](http://www.ColumbiaGalleries.com) or contact the city’s  
Office of Cultural Affairs (OCA)  
(573) 874-6386, [oca@GoColumbiaMo.com](mailto:oca@GoColumbiaMo.com) or  
[www.GoColumbiaMo.com](http://www.GoColumbiaMo.com) (search word: GoArts).

Cover images reprinted by permission  
from Poppy, PS:Gallery and  
The State Historical Society of Missouri.



Photos reprinted by permission from Landmark Bank, Poppy and the Museum of Anthropology.

**Columbia's galleries are for experiencing the arts, browsing and buying.**

# Artrageous

F R I D A Y S



Held on the last Fridays of January, April and July, Artrageous Fridays combine the idea of a gallery crawl with the feel of a downtown festival. Additionally, for one weekend in October, the event extends from Friday through Sunday for an Artrageous Weekend. At all four events, venues will feature art exhibits, storytelling, poetry, dance, live music, artist demonstrations and special installations at numerous walkable locations throughout The District and nearby campuses. Start where you like and visit as many or as few locations as you choose. There is no entry fee to attend Artrageous.

**For specific dates, complete details and a printable map, visit [www.artrageousfridays.com](http://www.artrageousfridays.com)**

# **galleries**



## *downtown in The District...*



Image reprinted by permission from à la campagne.

Have an empty spot on your wall? Fill it with original art from one of the many retail galleries in mid-Missouri.

### **à la campagne**

918 E. Broadway, (573) 815-9464  
hours: Mon.–Sat., 10 a.m. to 6 p.m.

Original artwork by Missouri artists is displayed among antiques, furnishings and unique gifts.

### **Artlandish Gallery**

1019 Walnut Street, (573) 442-2999  
e-mail: [artlandish@live.com](mailto:artlandish@live.com)  
website: [www.artlandishgallery.com](http://www.artlandishgallery.com)  
hours: Tues.–Sat., 10 a.m. to 5 p.m.

Located in The North Village Arts District, Artlandish Gallery, features the work of more than 40 artists and offers fine art and crafts and workshops in a studio setting. Every quarter, the gallery hosts The Catacombs Art Market & Bazaar, a lively art fair with music and dance.



Photo reprinted by permission from Bluestem Missouri Crafts.

For many years, Bluestem Missouri Crafts has been nationally noted for the high quality and uniqueness of the art it carries, including recognition by NICHE magazine as a “Top Retailer of American Craft.”

## **Bluestem Missouri Crafts**

13 S. Ninth Street, (573) 442-0211

e-mail: [customers@bluestemmissouricrafts.com](mailto:customers@bluestemmissouricrafts.com)

website: [www.bluestemmissouricrafts.com](http://www.bluestemmissouricrafts.com)

hours: Mon.–Sat., 10 a.m. to 6 p.m.; Fri. until 8 p.m.;

Sun. noon to 5 p.m.

Bluestem Missouri Crafts, a partnership of artists, has been honored as one of the nation’s top retailers of American crafts. Bluestem’s three-room gallery features the work of more than 300 artists and craftspeople from Missouri and its eight neighboring states, including traditional and contemporary clay, glass, wood, metal and fiber works. Bluestem offers distinctive gift wrapping, information cards about each artist, shipping via UPS and a knowledgeable sales staff ready to assist.



Photo reprinted by permission from Columbia Art League.

**Columbia's retail galleries have something for everyone, from jewelry and framed paintings to functional dishes, holiday decorations and gifts.**

## **Columbia Art League (CAL)**

**207 S. Ninth Street, (573) 443-8838**

**e-mail: [artleague@centurytel.net](mailto:artleague@centurytel.net)**

**website: [www.cal.missouri.org](http://www.cal.missouri.org)**

**hours: Tues.–Fri., 11:30 a.m. to 5:30 p.m.; Sat., 11 a.m. to 5 p.m.**

Founded in 1959, the Columbia Art League (CAL) has been showcasing work by local and national artists, both accomplished and rising, for more than half a century. CAL's exhibitions change six or seven times a year, with most of the displayed works available for sale, including jewelry, ceramics, photography, oil and watercolor paintings, drawing, works in wood and glass and fiber art. CAL also offers day and evening art classes for children and adults and hosts the Art in the Park festival the first weekend in June.

## **Missouri Art Gallery**

**9 N. Tenth Street, (573) 443-5010**

**hours: Mon., Tues., Thurs., Fri., 11 a.m. to 4 p.m.;**

**Sat., 11 a.m. to 2 p.m.; closed Wed. & Sun.**

The Missouri Art Gallery features large collections of limited edition prints and originals, sculptures, carvings and collectibles by national and international award-winning artists. Custom framing services are available.

## North Village Studios

1019 E. Walnut Street, (573) 442-2999

e-mail: [artlandish@live.com](mailto:artlandish@live.com)

website: [www.artlandishgallery.com](http://www.artlandishgallery.com)

hours: Call for information on hours.

The North Village Studios are located in the emerging North Village Arts District, part of the old warehouse area of Columbia. This industrial-style setting provides a creative atmosphere for artists-in-residence who often open their studios to the public in conjunction with the adjoining Artlandish Gallery and related special events and concerts. Businesses calling the North Village Studios their creative home include Artlandish Gallery, Boxcar Films, Life Photography, Monarch Jewelry, Moon Shadow Studio, The Odd Pod, Studio K and You Photography.

## Orr Street Studios

106 Orr Street

e-mail: [director@orrstreetstudios.com](mailto:director@orrstreetstudios.com)

website: [www.OrrStreetStudios.com](http://www.OrrStreetStudios.com)

hours: Tues.–Sat., noon to 3 p.m.

This industrial space was converted into an art gallery and studio spaces for artists in 2007. Providing a unique opportunity for artists, Orr Street Studios offers both a work space and the opportunity to exhibit and sell work. Guest-artist exhibits are also featured, as is a free weekly lecture series of artist talks and literary readings. Orr Street Studios is available for rental for wedding receptions, private parties and fundraisers.

*Ceramic Mug*, Boran Moscov.  
Image reprinted by permission  
from Poppy and Boran Moscov.



## Poppy

920-922 E. Broadway, (573) 442-3223

e-mail: [info@poppyarts.com](mailto:info@poppyarts.com)

website: [www.poppyarts.com](http://www.poppyarts.com)

hours: Mon.–Sat., 10 a.m. to 6 p.m.; Thurs., 10 a.m. to 8 p.m.; Sun., noon to 5 p.m.

Since 1981, Poppy has featured “fun art to fine art” with a wide collection of handmade contemporary crafts, folk art, fine art and jewelry, including works in clay, glass, fiber, metal and wood. Poppy represents artists from throughout the United States, including many from the region, and was named one of the top 25 galleries for contemporary craft in the country by NICHE magazine in 2007, 2008 and 2009.



*Forest*, Jo Stealey. Photo reprinted by permission from PS:Gallery and Jo Stealey.

## **PS:Gallery**

**812 E. Broadway, (573) 442-4831**

**hours: Tues.–Sat., 11 a.m. to 6 p.m.; Sun., noon to 5 p.m.**

**e-mail: [art@perlow-stevensgallery.com](mailto:art@perlow-stevensgallery.com)**

**website: [www.perlow-stevensgallery.com](http://www.perlow-stevensgallery.com)**

PS:Gallery features rotating exhibits of local, regional and national artists working in jewelry, wood, glass, ceramics, painting, sculpture and fiber. The gallery's philosophy is that art should be inclusive, not exclusive, and that art should not be intimidating, but enjoyed by everyone. Other services available include art consultation, commissioned art and rental of the gallery for special events.

## **Pure Gallery**

**504 E. Broadway, (573) 256-2656**

**hours: Tues.–Sat., 10 a.m. to 6 p.m.; appointments upon request.**

**e-mail: [pureimaging@me.com](mailto:pureimaging@me.com)**

**website: [www.pureimaginggroup.com](http://www.pureimaginggroup.com)**

Pure Gallery promotes the work of local and regional fine art photographers and features limited-edition prints, framed and signed works. Video and photography services, including a portrait studio, are available. Other services include studio rental, framing and classes.

*While you're downtown...*



enjoy a self-guided walking tour of architecture and history in The District using the Historic Downtown Walk brochure. The guide details more than 50 locations, including the site at which renowned painter George Caleb Bingham once maintained his studio, just east of City Hall in the Daniel Boone Building, 701 E. Broadway. Print a copy of the brochure by accessing The District's website:[www.DiscoverTheDistrict.com](http://www.DiscoverTheDistrict.com)



## *elsewhere in Columbia...*

### **The Montminy Gallery**

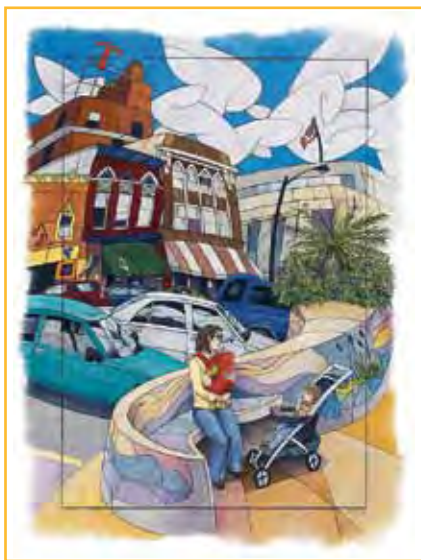
3801 Ponderosa Avenue, (573) 443-8936

e-mail: [boonecountymuseum@yahoo.com](mailto:boonecountymuseum@yahoo.com)

website: [www.boonehistory.org](http://www.boonehistory.org)

hours: Wed.–Sun., 12:30 to 4:30 p.m.

The Montminy Gallery is devoted to providing a venue for the exhibition and sale of regional artists' work. The gallery hosts approximately 12 exhibits a year and is operated by the Boone County Historical Society. Other exhibit space on site features historical exhibits.



*Breaktime*, Kelly Coalier, watercolor pencil.  
Image reprinted by permission from Kelly Coalier.

**Paintings, drawings, prints, photography  
and mixed media works are exhibited all year  
at Orchids and Art.**

### **Orchids and Art**

10 W. Nifong Boulevard, Suite B, (573) 875-5989

e-mail: [kellycoalier@aol.com](mailto:kellycoalier@aol.com)

website: [www.kellycoalier.com](http://www.kellycoalier.com)

hours: Mon.–Fri., 9:30 a.m. to 5:30 p.m.; Sat. 10 a.m. to 2 p.m.

Located on Columbia's growing south side, Orchids and Art features rotating shows of work by local and regional artists. Live orchid plants complement an eclectic mix of paintings, drawings, photographs and pottery. Custom framing services are also available.



## *on college campuses*

### **University of Missouri Craft Studio Gallery**

N12 Memorial Union, (573) 882-2889

e-mail: [CraftStudio@missouri.edu](mailto:CraftStudio@missouri.edu)

website: [www.CraftStudio.org](http://www.CraftStudio.org)

hours: Mon.–Thurs., noon to 9 p.m.; Fri.–Sat., noon to 6 p.m.; Sun., noon to 4 p.m.

The Craft Studio Gallery features the latest work of MU students, faculty and staff, as well as local artists and artisans all working in a variety of art forms.

### **George Caleb Bingham Gallery**

A126, Fine Arts Center, (573) 882-3555

e-mail: [binghamgallery@missouri.edu](mailto:binghamgallery@missouri.edu)

website: <http://art.missouri.edu>

hours: Mon.–Fri., 8 a.m. to 5 p.m.

The George Caleb Bingham Gallery exhibits works in a wide variety of media seeking to explore a range of artistic visions. Works by contemporary nationally and regionally known artists as well as MU faculty and students, provide a glimpse into new directions in art.



Late nineteenth-century prehistoric burial mask, from Kotzebue, Alaska.

Image reprinted by permission from the the Museum of Anthropology.

Much of the Museum of Anthropology's collection is comprised of historical artifacts from cultures native to North America.

### **Museum of Anthropology**

Swallow Hall, (573) 882-3573

e-mail: [anthromuseum@missouri.edu](mailto:anthromuseum@missouri.edu)

website: [www.anthromuseum.missouri.edu](http://www.anthromuseum.missouri.edu)

hours: Mon.–Fri., 9 a.m. to 4 p.m.

Since its founding in 1939, the Museum of Anthropology has served the research and teaching needs of the university as an archaeological curatorial facility. The permanent gallery focuses on Native American cultures and Missouri history from 11,200 years ago to the present.

## Museum of Art and Archaeology

Pickard Hall, (573) 882-3591

e-mail: [museumuser@missouri.edu](mailto:museumuser@missouri.edu)

website: <http://maa.missouri.edu>

hours: Tues.–Fri., 9 a.m. to 4 p.m.; Sat. & Sun., noon to 4 p.m.;  
closed Mon. and all university-observed holidays.

The Museum of Art and Archaeology is the third largest art museum in Missouri, housing more than 14,000 objects. Collections include ancient art, Byzantine and medieval art, European and American art, modern and contemporary art, African art and non-Western art. The museum also features a variety of temporary exhibitions. Of particular interest is the Cast Gallery, a collection of plaster casts from original Greek and Roman sculptures. Admission is free. Docent-led group tours can be arranged two weeks in advance.



*Watching the Cargo*, George Caleb Bingham, 1849, oil on canvas.

Image reprinted by permission from The State Historical Society of Missouri.

The State Historical Society of Missouri holds one of the largest collections of paintings by George Caleb Bingham. Many other Missouri artists, both past and present, are represented in the society's collection.

## The State Historical Society of Missouri

1020 Lowry Street, Ellis Library, entrance on Hitt Street and Lowry Mall, (573) 882-7083

e-mail: [shsofmo@umsystem.edu](mailto:shsofmo@umsystem.edu)

website: <http://shs.umsystem.edu>

hours: Tues.–Fri., 9 a.m. to 4:45 p.m.; Sat. 9 a.m. to 3:15 p.m.;  
closed all university-observed holidays.

The society's main gallery features rotating exhibits of historical and contemporary art, as well as permanent displays of works by noted Missouri artists George Caleb Bingham and Thomas Hart Benton.

## **Columbia College: Sidney Larson Gallery**

**Brown Hall, (573) 875-7517**

**e-mail: [bcameron@ccis.edu](mailto:bcameron@ccis.edu)**

**website: [www.ccis.edu/departments/arts](http://www.ccis.edu/departments/arts)**

**hours: Mon.–Fri., 8 a.m. to 10 p.m.; Sat. & Sun., Noon to 5 p.m.**

Named in honor of distinguished professor emeritus of art Sidney Larson, who taught at the college from 1951–2001, the Sidney Larson Gallery hosts several exhibits a year offering displays by professional artists, students and faculty. Its annual Paper in Particular exhibit is a national competition featuring works “on” or “of” paper and has been in existence since 1979.

## **Stephens College: Davis Art Gallery**

**corner of Walnut and Ripley Streets, (573) 876-7223**

**e-mail: [dscott@stephens.edu](mailto:dscott@stephens.edu)**

**website: [www.stephens.edu/news/stephensevents/finearts/](http://www.stephens.edu/news/stephensevents/finearts/)**

**hours: Mon.–Fri., 10 a.m. to 3 p.m. (also by appointment); closed for the summer and all college-observed holidays.**

Established in 1965 by alumna Nellie Stratton Davis and her husband Lewis, the Davis Art Gallery functions as a teaching gallery. It features monthly exhibits by professional guest artists, faculty and senior students.



**The Stephens College Historic Costume Gallery holds items that date back to the 1700s.**

Photo reprinted by permission from Stephens College.

## **Stephens College: Historic Costume Gallery**

**Lela Raney Wood Hall, mezzanine level, 6 N. College Avenue, (573) 876-7233**

**website: [www.stephens.edu/campuslife/researchlibrary/info.php](http://www.stephens.edu/campuslife/researchlibrary/info.php)**

**online collection: <http://emuseum.stephens.edu>**

**hours: Sat. & Sun., noon to 3 p.m.; Tues., 12:30 to 2 p.m.; Thurs., 12:30 to 2 p.m. and 5:30 to 8:30 p.m.; closed all college-observed holidays. Check website for summer hours.**

The Historic Costume Gallery showcases a working collection of garments from the Stephens College Costume Museum and Research Library and is Missouri’s most extensive holding of historical garments. In addition to exhibit space, storage areas protect the integrity of the nearly 13,000 items in the collection, and classroom space allows for lectures, special events and research. Special tours can be scheduled.



## *corporate collections of note*



Photo reprinted by permission from Boone County National Bank.

**Customers and visitors alike may enjoy the varied works shown in the “Lobby Gallery” of Boone County National Bank’s main location in downtown Columbia.**

### **Boone County National Bank**

**720 E. Broadway, (573) 874-8535**

Boone County National Bank’s collection of local, national and international art is comprised mostly of contemporary paintings, sculptures and ceramics. The main bank, located downtown, features a lobby gallery with rotating exhibits and hosts the Boone County Art Show with the Columbia Art League each October. All 17 of the bank’s branches feature original works from the corporate collection.

### **Landmark Bank**

**801 E. Broadway, (573) 449-3911**

**website: [www.landmarkbank.com](http://www.landmarkbank.com)**

Landmark Bank’s art collection demonstrates that outstanding work is being produced by artists in the Heartland. While the artists featured are primarily from the Midwest, many are nationally and internationally celebrated. The collection is diverse, comprising works in various media, varying styles and subject matter, with an emphasis on contemporary ceramics. The bank also hosts Visions, an annual photography exhibit, in the fall.

# in neighboring communities...



Photo reprinted by permission from the Ashby-Hodge Gallery of American Art.

**Get inspired. Attend one of the many special events sponsored year round by local galleries and museums and enjoy original art, live music and good food.**

## **Ashby-Hodge Gallery of American Art**

Central Methodist University, Fayette, MO,  
(660) 248-6304

e-mail: [jegeist@centralmethodist.edu](mailto:jegeist@centralmethodist.edu)

website: [www.centralmethodist.edu](http://www.centralmethodist.edu)

hours: Tues., Wed. & Thurs., 1:30 to 4:30 p.m.; Sun. when school is in session, 1:30 to 4:30 p.m.

Located on the campus of Central Methodist University in Fayette, the Ashby-Hodge focuses on regional art. Its collection features work by many Midwestern artists. Several exhibits are organized each year.

## **Christopherson Gallery**

165 Roby Farm Road, Rocheport, MO, (573) 289-8835

e-mail: [kristin@christophersonart.com](mailto:kristin@christophersonart.com)

website: [www.christophersonart.com](http://www.christophersonart.com)

hours: Seven days a week by appointment.

Located atop a Missouri River bluff, Christopherson Gallery provides a retreat experience featuring works of art by local and international artists. Visitors may discover works perfect for offices or homes. Call to schedule a viewing, either at the gallery or an on-site presentation at home or at the office. A second location in Columbia allows for private showings.

## **Flavors of the Heartland/Rocheport Gallery**

201 Second Street, Rocheport, MO, (573) 823-5054

e-mail: [rocheportgallery@tranquility.net](mailto:rocheportgallery@tranquility.net)

hours: Wed.–Sat., 11 a.m. to 5 p.m.; Sun., noon to 5 p.m.;

Mon. & Tues. by appointment.

The Rocheport Gallery features two- and three-dimensional fine art created by regional artists. Exhibits rotate every six weeks. A visitor's guide with information about historic Rocheport is available.



Photo reprinted by permission from Shirahaze Gallery.

## **Shirahaze Gallery**

200 Second Street, Rocheport, MO, (573) 356-7154

e-mail: [shirahaze@gmail.com](mailto:shirahaze@gmail.com)

website: [www.shirahaze.com](http://www.shirahaze.com)

hours: Sept.–Apr. Fri.–Sun., 11 a.m. to 5 p.m.;

May–Aug. Tue.–Sun., 11 a.m. to 5 p.m.; or by appointment.

Located in historic Rocheport close to the Katy Trail State Park, Shirahaze Gallery features fine ceramic art by Yukari Kashihara and photographic prints by Thomas Scharenborg. Other art and crafts from Japan, handmade jewelry and woodcut prints are also available. Call for more information about photographic services and commission work.

# art while you eat...



MANY LOCAL RESTAURANTS FEATURE ORIGINAL ART in their dining areas, often changing exhibiting artists regularly. Generally, the art is for sale. Though not a comprehensive list, the following restaurants are worth checking out, for their art and for their food.

## **Addison's American Grill**

709 Cherry Street  
(573) 256-1995

## **Broadway Brewery**

816 E. Broadway  
(573) 443-5054

## **Jina Yoo's Asian Bistro**

2200 Forum Boulevard,  
Suite 109, (573) 446-5462

## **Lakota Coffee Company**

24 S. Ninth Street  
(573) 874-2852

## **Main Squeeze**

28 S. Ninth Street  
(573) 817-5616

## **Sophia's**

3915 S. Providence  
(573) 874-8009

## **Sparky's Homemade Ice Cream**

21 S. Ninth Street  
(573) 443-7400

## **Sven's Kafé and Gallery**

110 N. Orr Street, Suite 101  
(573) 875-0840

## **Sycamore**

800 E. Broadway  
(573) 874-8090

## **Teller's Gallery & Bar**

820 E. Broadway  
(573) 441-8355

## **Upper Crust**

904 E. Elm Street  
(573) 874-3033

## **Uprise Bakery & Ragtag Cinema**

10 Hitt Street  
(573) 256-2265

Don't miss the mural by artist Ned Vail on the outside west wall of

## **Shakespeare's Pizza**

225 S. Ninth Street

# your inner artist...



GET INSPIRED and create your own masterpieces, whether or not you are new to the art-making process. Though not a comprehensive list, the following organizations offer classes in various media and techniques for both children and adults.

## **Access Arts**

1724 McAlester Street  
(573) 875-0275

## **Artlandish Gallery**

1019 E. Walnut Street  
(573) 442-2999

## **Columbia Art League**

207 S. Ninth Street  
(573) 443-8838

## **Columbia Parks and Recreation**

1 S. Seventh Street  
(573) 874-7460

## **Craft Studio**

MU, N12 Memorial Union  
(573) 882-2889

## **Creative Days Art Studio**

1204 Rogers Street, Suite 102  
(573) 777-9278

## **The Mud Room**

1103 East Walnut Street  
(573) 441-1683

## **Museum of Art and Archaeology**

MU, 1 Pickard Hall  
(573) 443-3591

## **Village Glass Works**

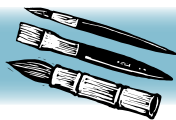
315 N. Tenth Street  
(573) 443-0393



Photo reprinted by permission from Orr Street Studios.

*“Every child is an artist. The problem is how to remain an artist once he grows up.”* — Pablo Picasso

# murals of note...



SEVERAL OF COLUMBIA'S GOVERNMENT BUILDINGS house significant murals depicting the history of the city and Boone County.

## Boone County Courthouse

801 E. Walnut Street

This mural, painted in 1994 by local artist Sidney Larson, depicts the evolution of the justice system in Boone County. It contains vignettes of well-known citizens James Sidney Rollins, George Caleb Bingham and freed slave John B. Lange, a successful entrepreneur. It also illustrates the stand by citizens called "Tigers" against guerilla forces during the Civil War. A second-floor mural, also by Larson, shows citizens gathering for church services and community activities in the new courthouse.

## The Guitar Building

28 N. Eighth Street

Local artist Sidney Larson created these paintings in 1989. The panels depict a social history of Columbia and Boone County from the mid-1830s to the early 1900s. Among the notables included in the murals are renowned artist George Caleb Bingham; James Sidney Rollins, "father" of the University of Missouri; John H. Lathrop, first president of MU; Civil War General Odon Guitar; and postmistress Ann Hawkins Gentry. One panel shows pack trains loaded with furs on their way to St. Louis, illustrating the importance of Columbia's location on the Boone's Lick Trail, which made the town a major link to the Santa Fe and Oregon Trails in the 19<sup>th</sup> century.

## Howard Building, Municipal Court Room

600 E. Broadway

The 12 panels featured in the courtroom were painted from 1934 to 1938 by University of Missouri art professor Dr. Kenneth Hudson. Each panel represents an event of interest in the development of Columbia as a city. Subjects depicted include early settlers, wagon trains, Columbia's colleges and the University of Missouri, Missouri River commerce, the railroad from Centralia to Columbia, pit coal mining and farming. Panels include period representations such as a Model T Ford and a 1930s street scene of downtown Columbia.



Image reprinted by permission from the City of Columbia Office of Cultural Affairs.

Detail of mural depicting the construction of Old Plank Road. Kenneth Hudson, 1935, Howard Building, Municipal Courtroom.

# public art...



Photo reprinted by permission from The District.

A favorite of visitors to the Boone County Courthouse Square is *Jamboree*, a bronze sculpture completed in 1996 by artists Jim Calvin and Andy Davis. It is one of many publicly accessible works of art in Columbia.

**COLUMBIA'S MANY SCULPTURES** are an outdoor museum accessible to everyone. No special outing must be planned to enjoy this museum—it is open every day, has endless hours and charges no admission fee. For a free brochure that details a self-guided walking or driving tour of more than 25 publicly accessible works of art in Columbia, go to [www.GoColumbiaMo.com](http://www.GoColumbiaMo.com) (search word: GoArts) or contact the City of Columbia Office of Cultural Affairs (OCA): (573) 874-6386 or [oca@GoColumbiaMo.com](mailto:oca@GoColumbiaMo.com). Also online are free audio tours of several of the works featured in the guide. Tours are available for downloading to iPods or MP3 players and are grouped as The Downtown Tour and The Around Town Tour. Both include short interviews with many of the artists who created the works. Printed copies of the guide are also available at City Hall, 701 E. Broadway, and at the Convention and Visitors Bureau (CVB), 300 S. Providence Road.



Image reprinted by permission from the City of Columbia Office of Cultural Affairs.

*Jamboree*, detail, Jim Calvin and Andy Davis, 1996, Boone County Courthouse Square.

# art on the Web...



## Artists' Registry

(573) 874-6386

e-mail: [oca@ColumbiaMo.com](mailto:oca@ColumbiaMo.com)

website: [www.OCAregistry.com](http://www.OCAregistry.com)

This online database of individuals, groups and organizations working in dance, literary art, music, theater and visual art is coordinated by the City of Columbia Office of Cultural Affairs as part of an effort to connect working artists with potential patrons.

## Arts Express Newsletter

(573) 874-6386

e-mail: [Arts Express@GoColumbiaMo.com](mailto:ArtsExpress@GoColumbiaMo.com)

website: [www.GoColumbiaMo.com](http://www.GoColumbiaMo.com) (search words: **GoArtsExpress**)

Arts Express appears bimonthly with listings of music, dance, theater, literary arts and visual arts opportunities. A special section includes offerings just for kids. The free newsletter is available through the City of Columbia Office of Cultural Affairs or online at [www.GoColumbiaMo.com](http://www.GoColumbiaMo.com) (search word: **GoArtsExpress**).

## Columbia Galleries

website: [www.ColumbiaGalleries.com](http://www.ColumbiaGalleries.com)

A service of the Columbia Convention and Visitors Bureau (CVB), the site features basic information about most local art galleries and links to their websites. For more information, go online or call the CVB at (573) 875-1231.

*"A good picture is equivalent to a good deed."* — Vincent Van Gogh, artist

Revised 2010.

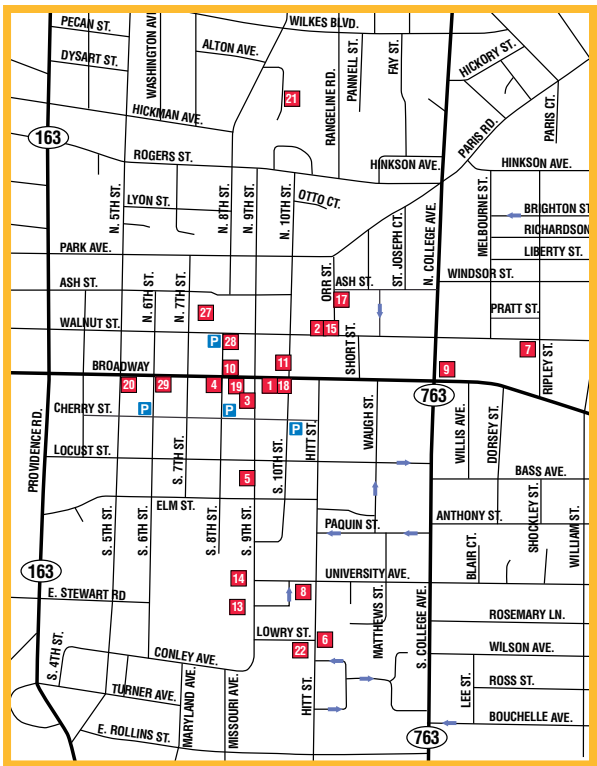
Text & Project Coordination: Marie Nau Hunter and Sarah Skaggs;

Design: Jan Wiese-Fales, Fertile Mind.

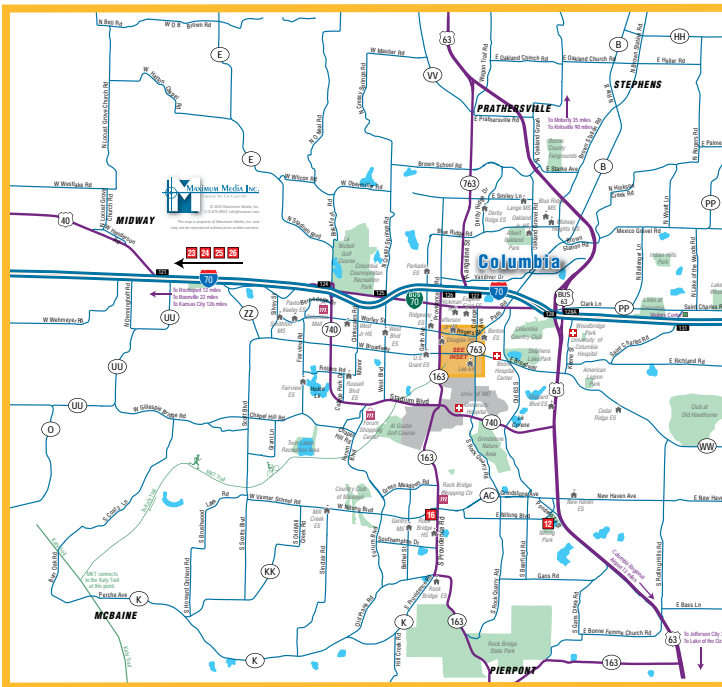
Editing: Marta Ferguson,

Wordhound Writing & Editing Services, LLC;

Maps: Maximum Media, Inc.



**P** PARKING GARAGE







City of Columbia  
Office of Cultural Affairs  
P.O. Box 6015  
Columbia, MO 65205

*Return Service Requested*