

A **public information meeting** will be held on September 17, 2013, to discuss:

A request by P1316, LLC (owner) for:

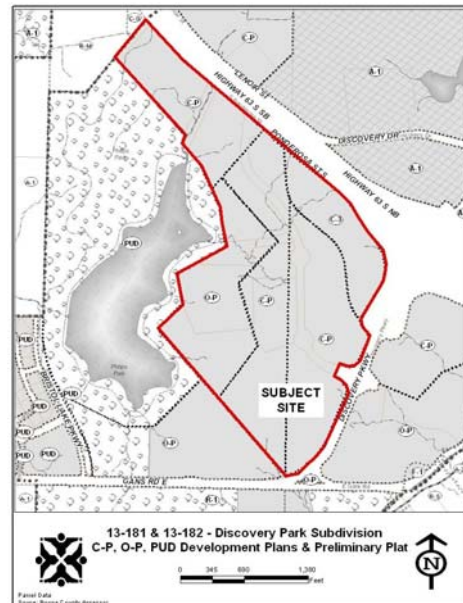
- 1 – Approval of a 23-lot preliminary plat to be known as "Discovery Park Subdivision Plat 1" (**Case 13-182**)
- 2 – Approval of C-P, O-P, and PUD development plans to be known as "C-P, O-P, and PUD Plans for Discovery Park Subdivision". (**Case 13-181**)

The subject 143.72 acre tract is located east of A. Perry Philips Park, north of Gans Road, and west of US Highway 63.

**When: 5:30pm, Tuesday, September 17**

**Where: City Hall Lobby**

**Info:** Patrick R. Zenner, Development Svcs. Mgr.  
(573) 874-7682



City of Columbia – Community Development Department  
701 E. Broadway, P.O. Box 6015, Columbia, MO 65205-6015  
[www.gocolumbiamo.com/community\\_development](http://www.gocolumbiamo.com/community_development) E-mail: [planning@gocolumbiamo.com](mailto:planning@gocolumbiamo.com)

A **public information meeting** will be held on September 17, 2013, to discuss:

A request by P1316, LLC (owner) for:

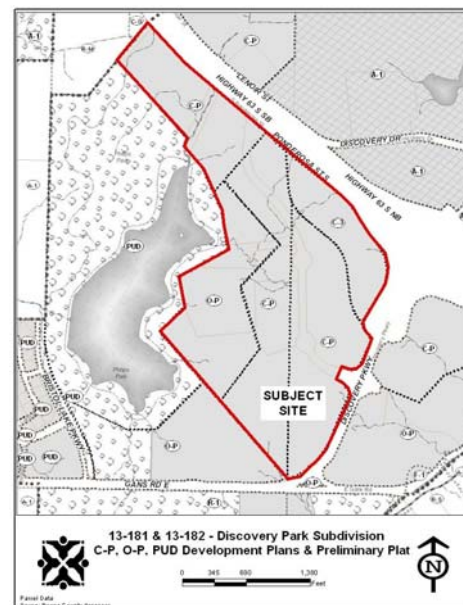
- 1 – Approval of a 23-lot preliminary plat to be known as "Discovery Park Subdivision Plat 1" (**Case 13-182**)
- 2 – Approval of C-P, O-P, and PUD development plans to be known as "C-P, O-P, and PUD Plans for Discovery Park Subdivision". (**Case 13-181**)

The subject 143.72 acre tract is located east of A. Perry Philips Park, north of Gans Road, and west of US Highway 63.

**When: 5:30pm, Tuesday, September 17**

**Where: City Hall Lobby**

**Info:** Patrick R. Zenner, Development Svcs. Mgr.  
(573) 874-7682



City of Columbia – Community Development Department  
701 E. Broadway, P.O. Box 6015, Columbia, MO 65205-6015  
[www.gocolumbiamo.com/community\\_development](http://www.gocolumbiamo.com/community_development) E-mail: [planning@gocolumbiamo.com](mailto:planning@gocolumbiamo.com)