

**MAPLEWOOD HOME AND BUILDINGS**

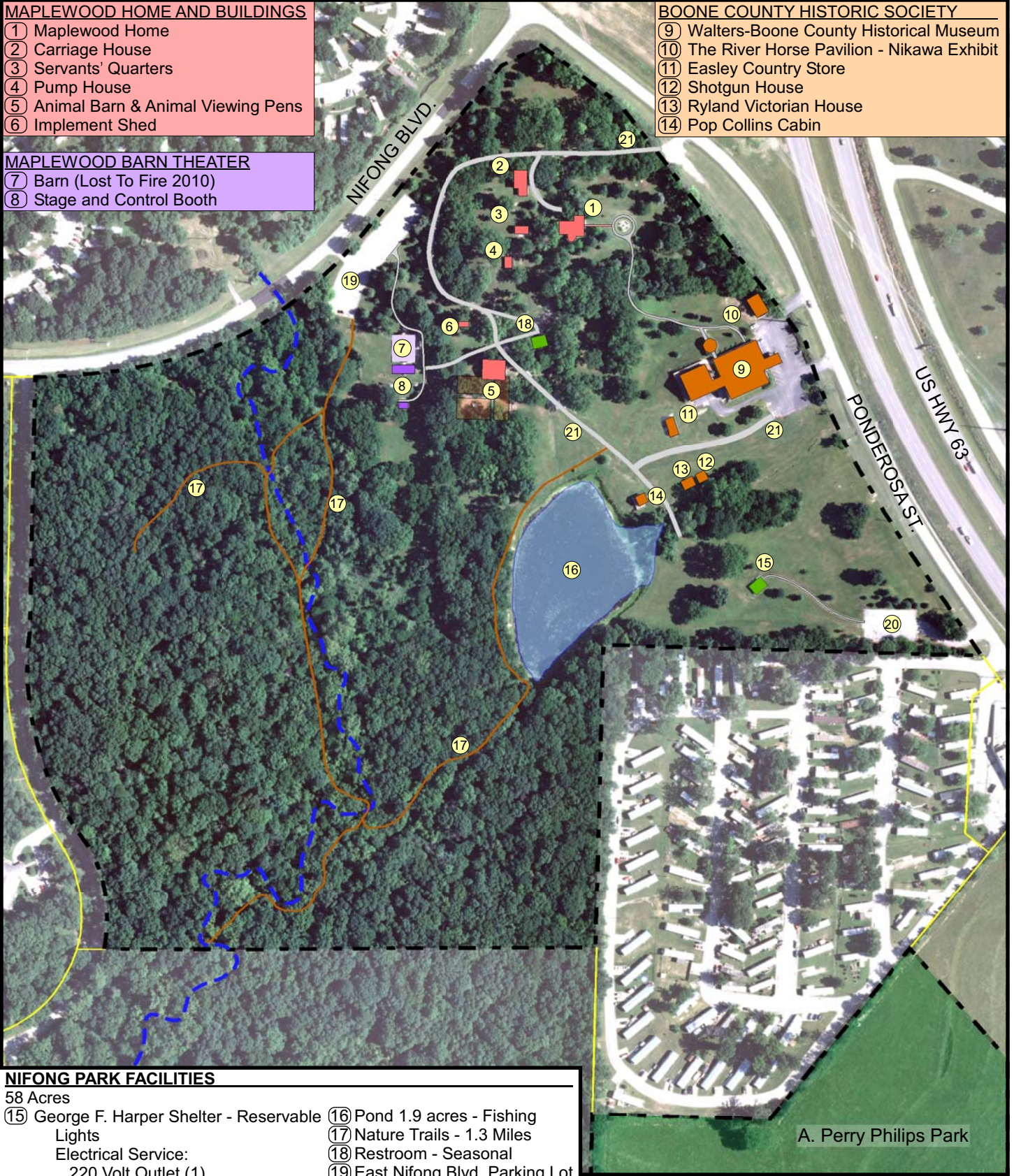
- ① Maplewood Home
- ② Carriage House
- ③ Servants' Quarters
- ④ Pump House
- ⑤ Animal Barn & Animal Viewing Pens
- ⑥ Implement Shed

**MAPLEWOOD BARN THEATER**

- ⑦ Barn (Lost To Fire 2010)
- ⑧ Stage and Control Booth

**BOONE COUNTY HISTORIC SOCIETY**

- ⑨ Walters-Boone County Historical Museum
- ⑩ The River Horse Pavilion - Nikawa Exhibit
- ⑪ Easley Country Store
- ⑫ Shotgun House
- ⑬ Ryland Victorian House
- ⑭ Pop Collins Cabin



**NIFONG PARK FACILITIES**

- 58 Acres
- ⑮ George F. Harper Shelter - Reservable Lights  
Electrical Service:  
220 Volt Outlet (1)  
110 Volt Duplex Outlets (4)  
Drinking Fountain (ADA)  
1 Double BBQ Grill (ADA)  
Volleyball Area
- ⑯ Pond 1.9 acres - Fishing
- ⑰ Nature Trails - 1.3 Miles
- ⑱ Restroom - Seasonal
- ⑲ East Nifong Blvd. Parking Lot  
54 Standard Spaces, 4 ADA Spaces
- ⑳ Ponderosa St. Parking Lot  
22 Standard Spaces, 2 ADA Spaces
- ㉑ Gravel Trail - No Vehicles

A. Perry Philips Park

# Nifong Park

