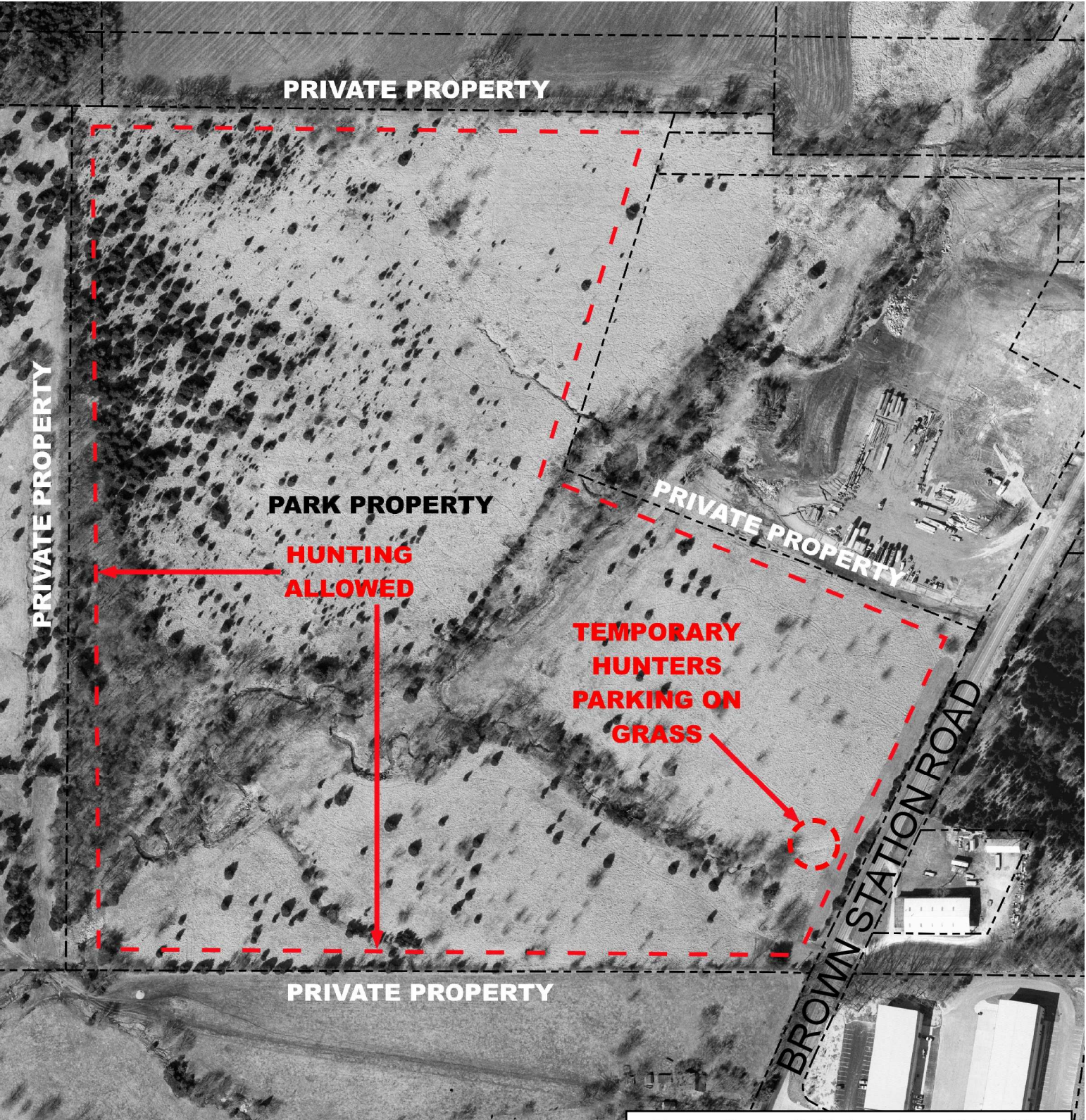


SMITH DONATION

BROWN STATION ROAD



Archery hunting allowed Sept. 15 - Jan. 15
By Registration only.
Hours: Beginning 1/2 hour before sunrise
until 1/2 hour after sunset



- No hunting or field dressing within 100 feet of trails or private property.
- No four wheelers or motorized vehicles may be used in connection with archery program.
- Portable tree stands allowed with proper identification. No nails or screw in steps allowed.
- Park remains open to the public.